

Meninges

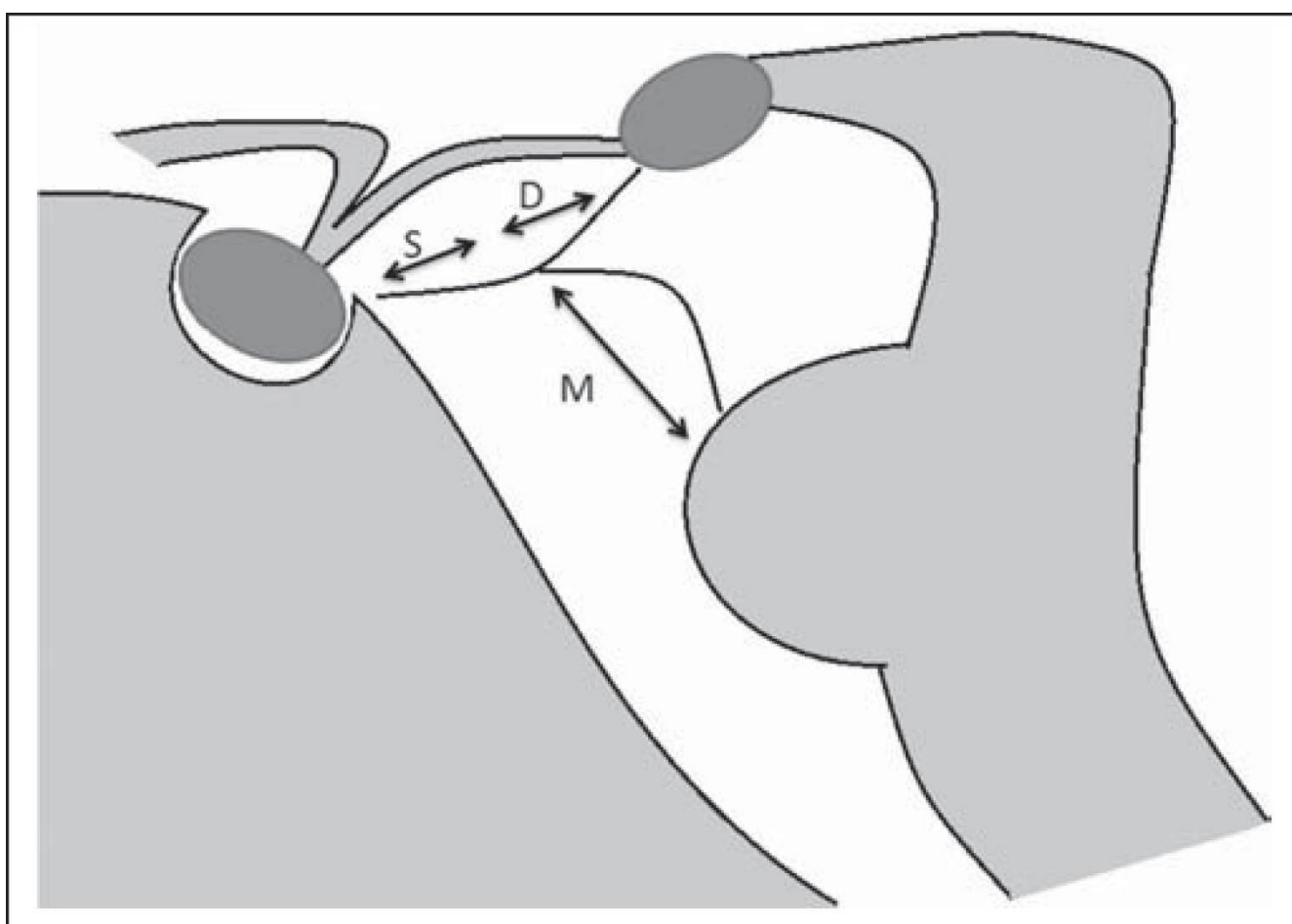
Last updated: September 5, 2017

ARACHNOID

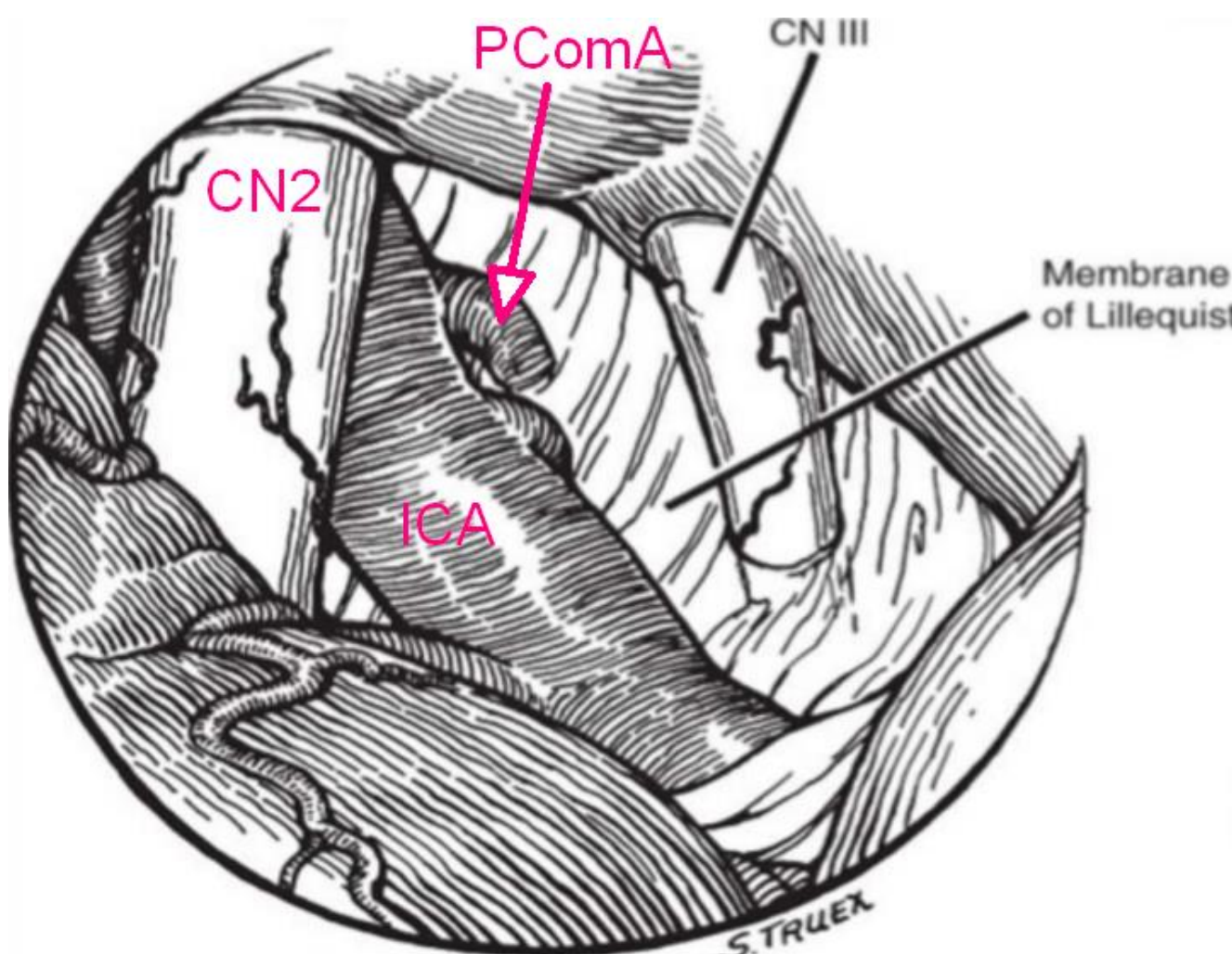
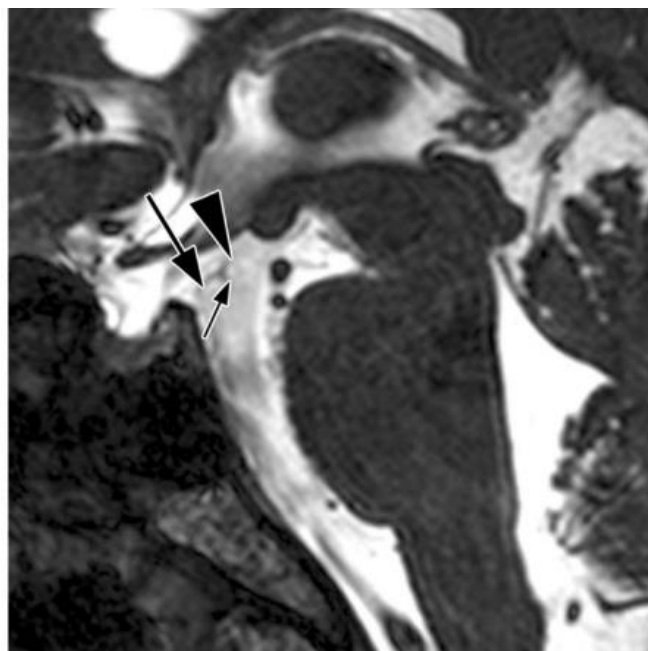
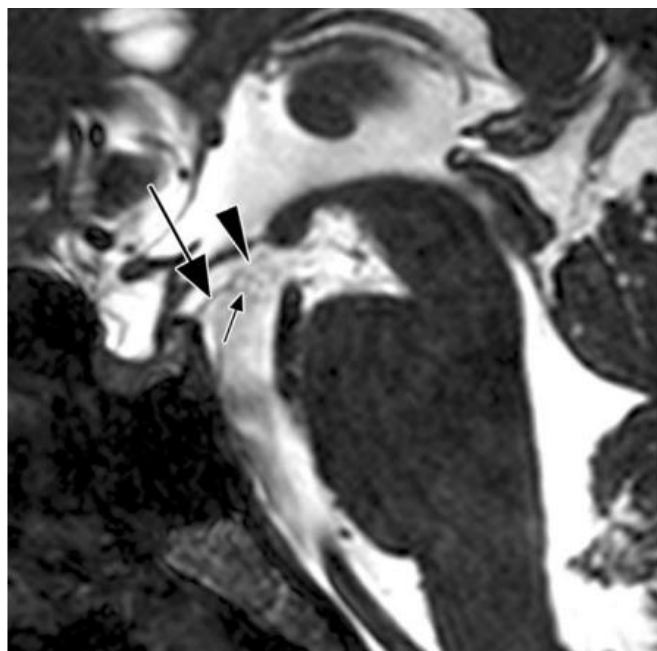
LILIEQUIST MEMBRANE

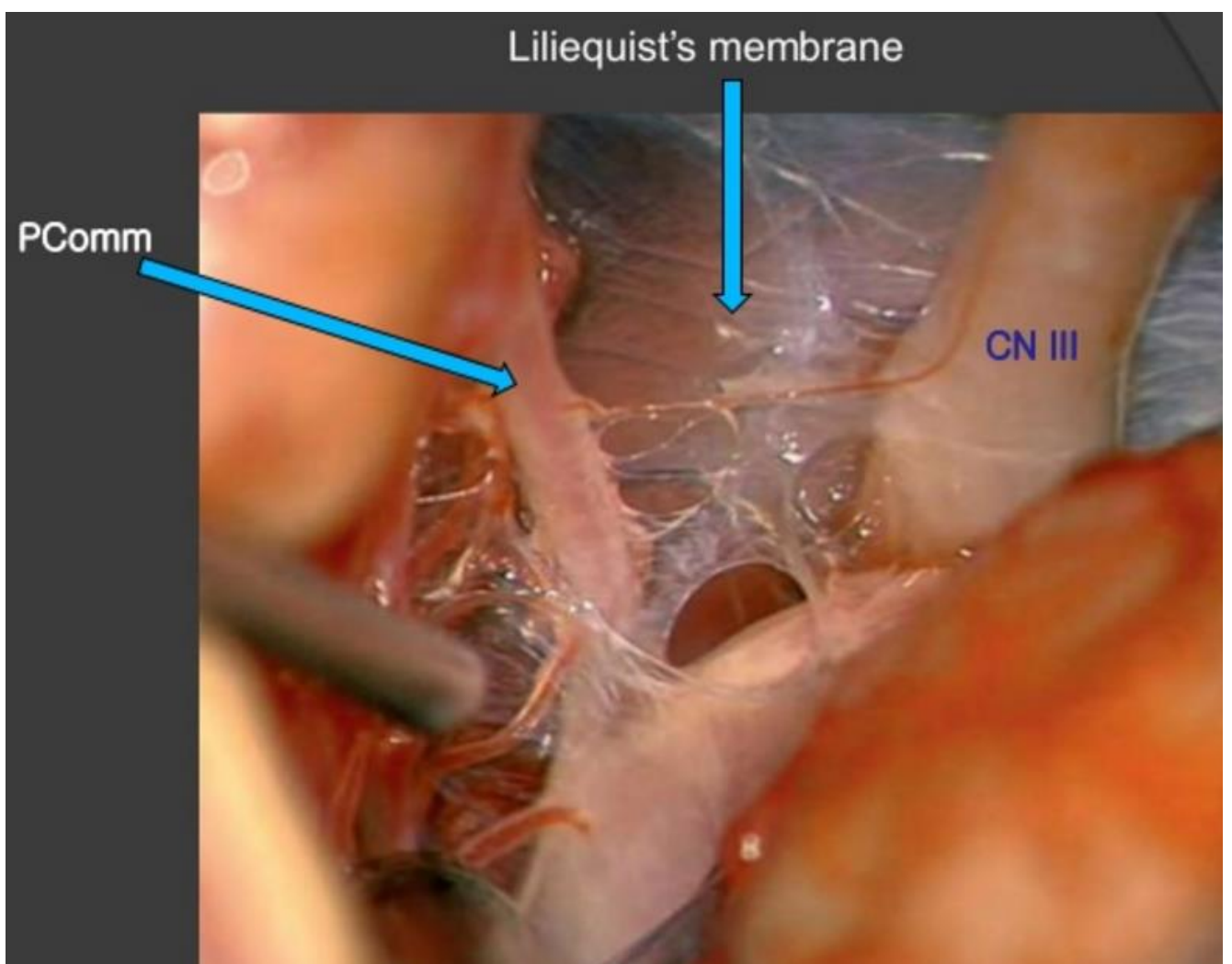
- arachnoid membrane.

- attachments: from diaphragma sellae to anterior edge of mammillary body and laterally attached to CN III.
- separates three cisterns:
 - 1) chiasmatic cistern – LM forms floor for this cistern
 - 2) perimesencephalic (interpeduncular) cistern – LM forms “curtain” for this cistern
 - 3) prepontine cistern – LM forms roof for this cistern
- LM separates supratentorial and infratentorial CSF compartments.
- very thin - not routinely visualized in imaging studies (can be visualized on MRI CISS heavily T2 weighted 3D sequences).
- described by Key and Retzius in 1875, but rediscovered by Lilliequist in 1956 in his pneumoencephalographic studies of cadavers.



D - diencephalic segment, M - mesencephalic segment, S - sellar segment.





BIBLIOGRAPHY for ch. "Neuroscience Basics" → follow this [LINK >>](#)